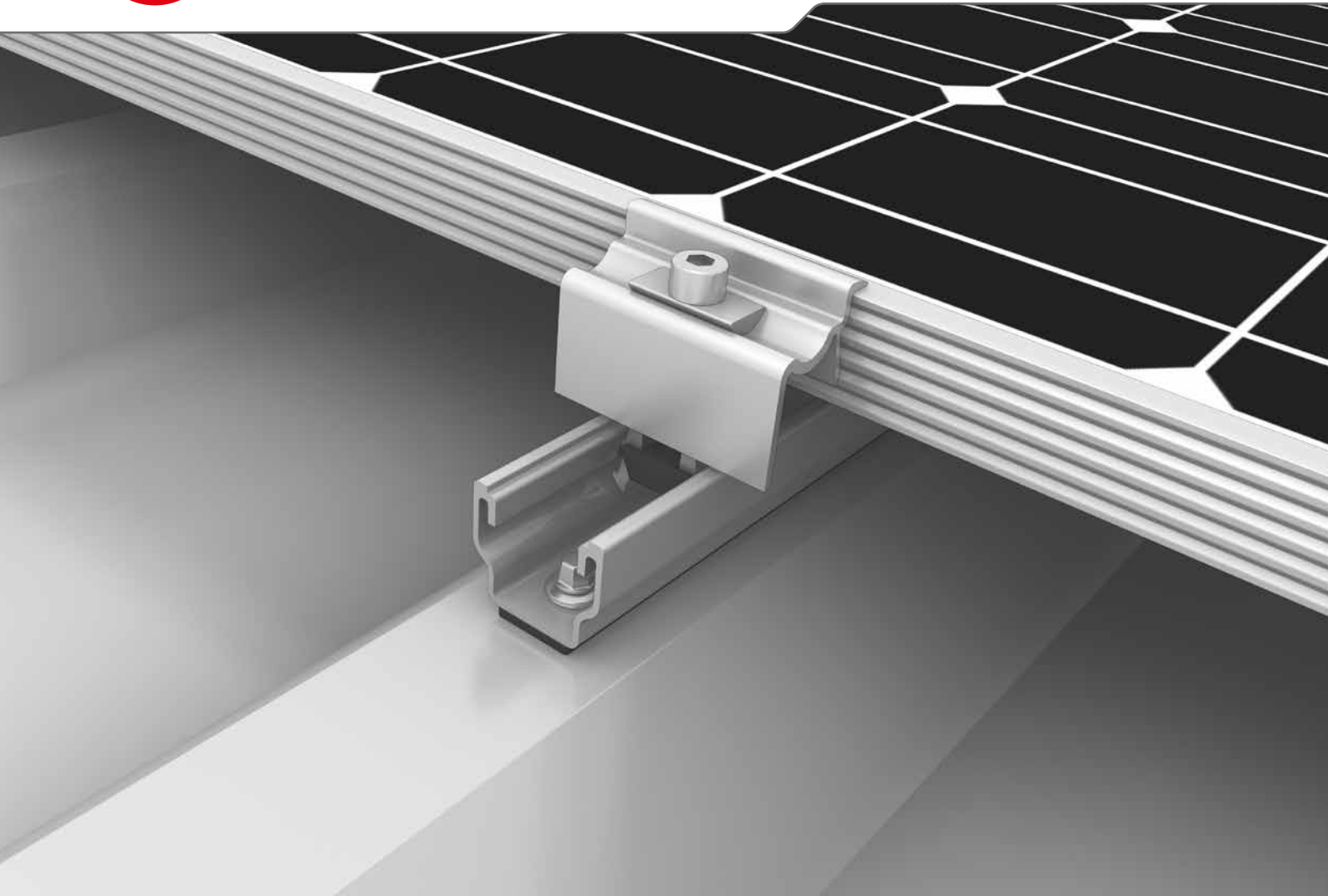
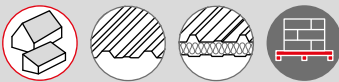




# MultiRail System



- ▶ Easy and proven – as a short rail or a flexible component in various lengths
- ▶ Quick planning with less material and greater effectiveness
- ▶ Solid base rail for S-Dome Small trapezoidal elevation

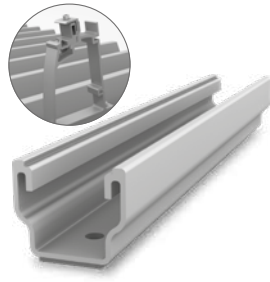


## MULTIRAIL VERSIONS



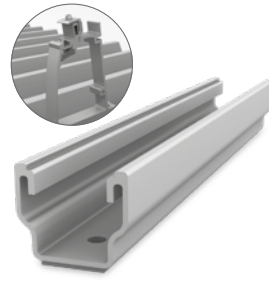
### MultiRail 10

- ▶ Length 100 mm
- ▶ Landscape mounting



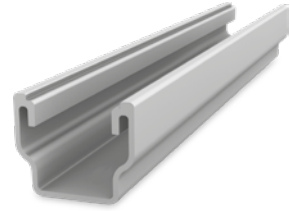
### MultiRail 25

- ▶ Length 250 mm
- ▶ Roof connector for S-Dome Small elevation



### MultiRail 25/3

- ▶ Length 250 mm
- ▶ Roof connector for S-Dome Small
- ▶ With three boreholes for roofs with 15° inclination



### MultiRail 4.20

- ▶ Length 4 200 mm
- ▶ Long rail for cutting to customised sizes
- ▶ Without EPDM seal; to be fastened manually with adhesive

## TECHNICAL DATA

	MultiRail 10, 25, 25/3, 4.20
Scope of application	Pitched roofs, 5-75°, with trapezoidal sheet metal or sandwich panel
Fastening type / roof fixture	Fastened with self-tapping sheet screws
Requirements	<ul style="list-style-type: none"> <li>▶ Sheet thickness: <math>\geq 0.5</math> mm (steel and aluminium)</li> <li>▶ Sandwich panel: approval from manufacturer required</li> <li>▶ Crest width: at least 22 mm</li> <li>▶ Maximum crest width: independent of crest distance</li> </ul>
Material	Aluminium (EN AW-6063 T66); EPDM
W = width [mm]	39
H = height [mm]	35
L = rail length [mm]	<ul style="list-style-type: none"> <li>▶ MultiRail 10: 100</li> <li>▶ MultiRail 25: 250</li> <li>▶ MultiRail 4.20: 4200</li> </ul>
Cross-bracing with	SingleRail

