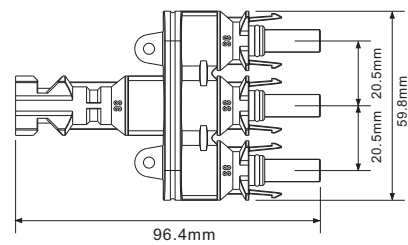
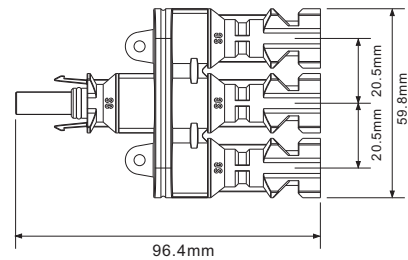


TECHNICAL DATA

Insulation Material	PPO
Contact Material	Copper, Tin plated
Suitable Current	30A
Rated Voltage	1000V (TUV) 600V (UL)
Test Voltage	8KV (TUV50HZ,1min)
Contact Resistance	<0.5mΩ
Degree Of Protection	IP 67
Ambient Temperature Range	40℃~ +85℃
Flame Class	UL 94 V0
Safety Class	II
Pin Dimensions	Ø4mm



MAIN SPECIALITY

- >> low power loss
- >> With the capacity of anti-aging and resistance to ultraviolet radiation on the outer cover
- >> With convenient installation, strong commonality
- >> To meet the using requirement under bad outdoor condition